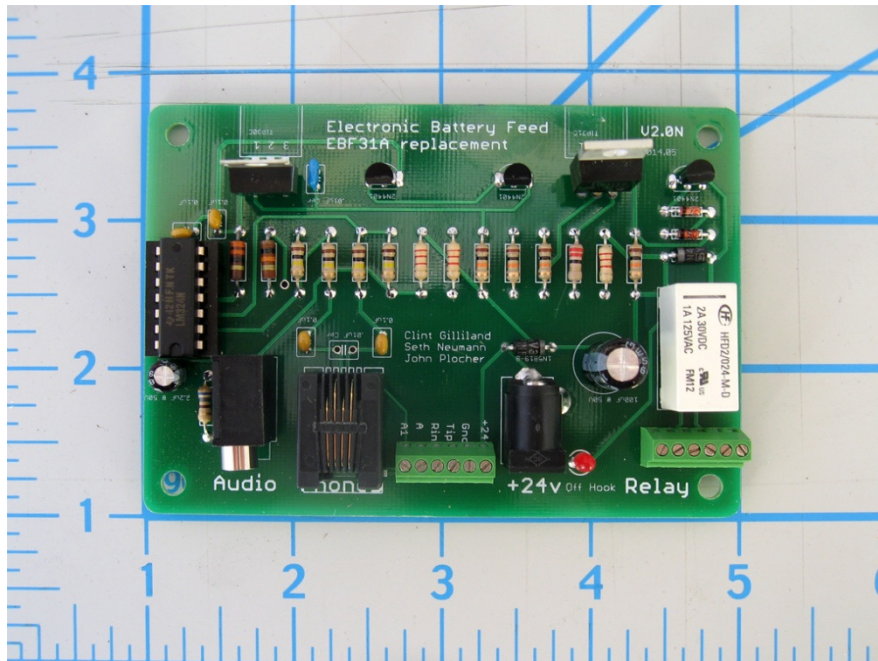


EBF31A – Telephone Battery Feed Board

The **Electronic Battery Feed 31A** provides power and off hook detection for a telephone talk circuit suitable for a Model Railroad dispatchers' line



EBF31A:

- Operates on 24 volts regulated DC, draws about 100 ma
- Supports at least 4 phones off hook at once, suitable for reading and copying orders on a TT&TO railroad
- Has a double-pole, double throw relay ("2 form C contacts" for you phone guys) rated at 2A, with screw terminals for control of auxiliary circuits
- has an LED "off hook" indicator
- Has an RJ11 jack and screw terminals for the phone line
- Has a 2.5mm center positive jack and screw terminals for power (supplies available from Jameco, Radio Shack, Amazon)
- Has a line level isolated monitor output on a stereo 3.5 mm audio jack
- Fits the same 2.75" DIN rail that MRCS cpNodes and IOX16/32 expanders use
- Uses standard semiconductors available from Jameco and similar suppliers
- Available from MRCS as a bare board or Assembled and Tested

Finally a Telephone Battery Feed Solution Based on Easily Available Parts!

